

Universal load cell for weight measurement on lift cabins (placement under the lift cabin)



X-132

190 x 45 x 48 mm,
0...800 kg

Features

- Compact design in solid steel housing
- With central bore (M10/M12 thread)
- Very attractive pricing

Application

The X-132 load cell is designed as an OEM load cell. It is suitable for load measurement in elevators under the lift car.

The measurement at the car floor enables a very high accuracy. Thus, empty cabins as well as overload cases can be measured with high reliability.

The sensors can be connected directly to the X-232 load measurement interface from X-Sensors. Subsequently, three switching points for empty booth, full load and overload are available in addition to other functions.



Under the cabin floor

Ordering code

Description	Measuring range	Output signal	Contact area in mm	Specification
X-132-D-800kg-2.5m-1	0...800 kg	2.0 mV/V	190 x 45 mm	page 3
X-132-D-800kg-5.0m-1	0...800 kg	2.0 mV/V	190 x 45 mm	page 3

Universal load cell X-132

190 x 45 mm

till 800 kg



Specification

Performance

Measuring range / Output signal	2.0 mV/V
Linearity	± 0.5 % from fullscale
Repeatability	± 0.1 % from fullscale
Tolerance output signal	± 0.02 %
Zero point unmounted	± 1 % from fullscale

Electrical data

Terminal resistance strain gauge measuring bridge	350 Ohm
---------------------------------------------------	---------

Materials

Housing	Steel
---------	-------

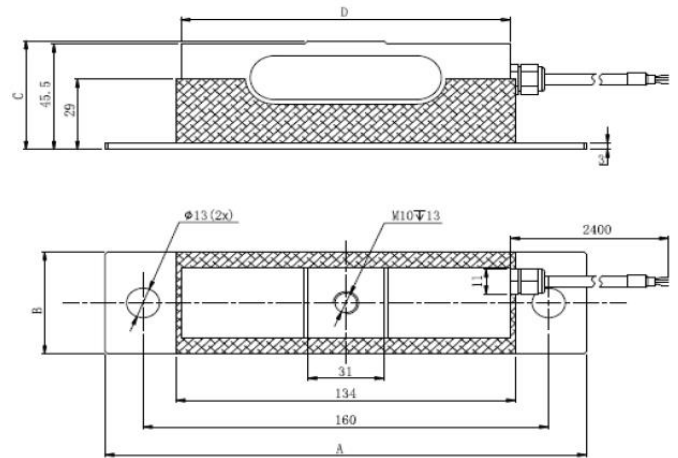
Mechanical data

Safe overload	150 % from fullscale
Breaking load	200 % from fullscale
Electrical connection	Connection cable
Threaded hole	M10
Cable length	2.5 / 5.0 m

Environmental data

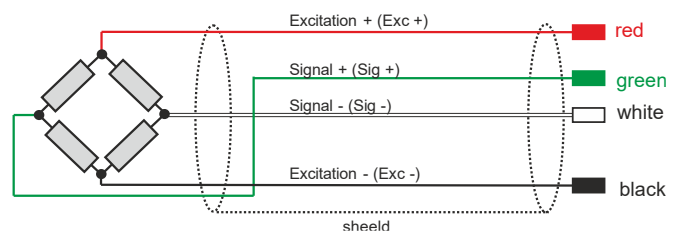
Ambient temperature	-10...65 °C
Protection class	IP 65

Mechanical dimensions



SIZE (mm)	A	B	C	D
CAP (Kg)				
800	190	45	48	130

Wiring



Ordering code

For detailed ordering information, see page 2.

Universal load cell X-132

190 x 45 mm

till 800 kg



Specification

Performance

Measuring range / Output signal	2.0 mV/V
Linearity	± 0.5 % from fullscale
Repeatability	± 0.1 % from fullscale
Tolerance output signal	± 0.02 %
Zero point unmounted	± 1 % from fullscale

Electrical data

Terminal resistance strain gauge measuring bridge	350 Ohm
---------------------------------------------------	---------

Materials

Housing	Steel
---------	-------

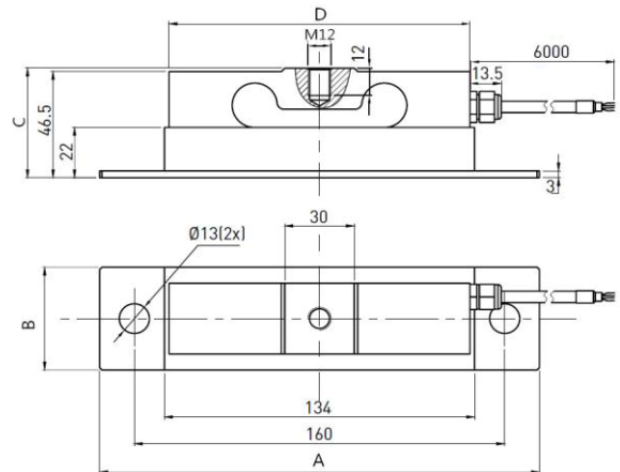
Mechanical data

Safe overload	150 % from fullscale
Breaking load	200 % from fullscale
Electrical connection	Connection cable
Threaded hole	M12
Cable length	2.5 / 5.0 m

Environmental data

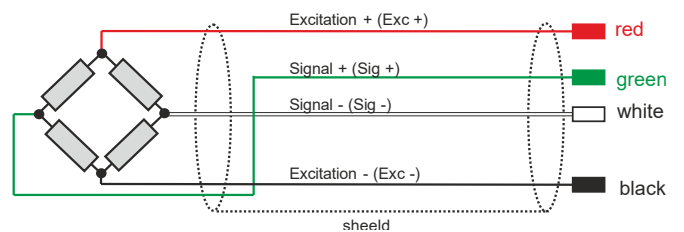
Ambient temperature	-10...65 °C
Protection class	IP 65

Mechanical dimensions



SIZE (mm)	A	B	C	D	
CAP (Kg)	800	190	45	48	130

Wiring



Ordering code

For detailed ordering information, see page 2.